



**CATERHAM**

E N J O Y





---

## OWN THE ROAD

The road can be your friend or your adversary. Some roads are benign and easy to enjoy time with. Others make it their business to challenge you – throwing you cheeky turns, switchbacks and gradients.

These are the roads that the Caterham driver, with their light feet and fast hands, actively seeks out; the roads that give it all they've got but never quite have enough to take down the expert pilot and the legendary Seven – a tag team made in automotive combat heaven.

Driving doesn't have to be a fight. It's just more fun sometimes if you get in the ring.



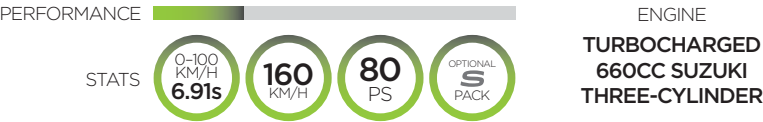
# SEVEN

At a little over 500kg and with engines ranging from 80 to 237ps, the Seven offers a broad range of performance from swift to astonishing, with the key attribute being copious amounts of fun.



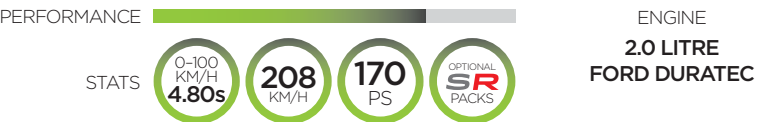
165

With its live-axle rear suspension and compact turbo engine, our entry-level Seven 165 provides affordable charm and finesse rather than outright power.



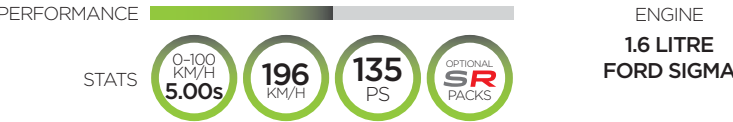
355

Being propelled by a Ford Duratec 2.0L engine, the Seven 355 blends performance and exhilaration for hours-upon-hours of driving pleasure.



275

Plenty of smiles, as the Seven 275's free-revving Ford Sigma engine provides all-round driving enjoyment.



485

Stepping up a gear in performance, the Seven 485 gains 67 more horsepower over the Seven 355, providing the most ardent sports car fan real driving thrills. The Seven 485 is the most potent EU6-Compliant Seven we've ever made.





# SEVEN165

---

Everything looked better in black and white. From a time when you didn't merely have an argument, you smacked someone in the face with a glove and demanded satisfaction in a duel at sunrise.

Seemingly born of that sepia-toned time, the Seven 165's skinny tyres – perfect for four-wheel drifts – live rear axle for proper, old-school handling and a lightweight 80ps, three-pot engine make it an old-fashioned pugilist.

That 80ps may not sound like much, but as a super-lightweight car, the Seven 165 doesn't need much in order to pack a punch.

The lack of driver aids like traction control, ABS, launch control or power steering – all of which come down to the nimbleness of your hands and feet – means that it's just down to you to take the fight to the road. Think more Moss and Fangio, rather than Hamilton and Vettel.

If ex-F1 champion and Seven-racer Graham Hill was still with us, we think the Seven 165 would be the one he would choose to drive.





# SEVEN275

---

With little more than 500kg to push along, the 135ps that the Seven 275 packs, quietly delivers an unexpected but satisfying thump.

To put the wily power of this Seven into context, your average family hatch would need 350ps under the bonnet to match it. Even then, it would come a cropper when it came to stopping or turning corners at any speed.

The Seven 275's agile frame lets it sneak around in the performance pack and with enough power to get the job done – 0–100km/h in five seconds – it can leave much of the opposition for dead without the enemy ever knowing it was there.

It will do it all with an understated sense of style.





# SEVEN355

---

Precision, control and finesse are fantastic and are present in all Sevens to some degree, but the more experienced Seven driver may start longing for more power.

With the move to more muscle, thanks to a Ford Duratec engine, the Seven 355 adds brute strength to the Seven's armoury. Now with 170ps on tap and more low down torque, we head into more pumped up territory, with a car just itching for the right driver to take control.

But this challenger is equally at home as a cruiser. The easy power delivery from the 2.0 litre engine, makes this the benevolent heavyweight of Sevens. Welcoming and fun to its friends, devastating to its rivals.





# SEVEN485

Some cars just aren't afraid of any road that comes into view. The Seven 485 is one of those cars. The Seven 485 is the fastest production car we've ever built in Europe.

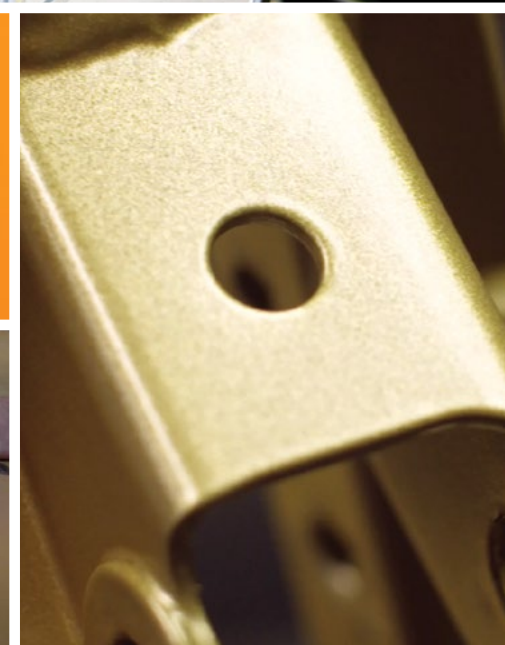
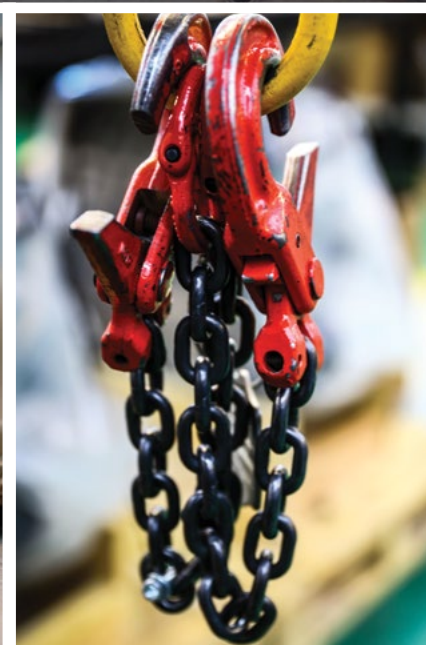
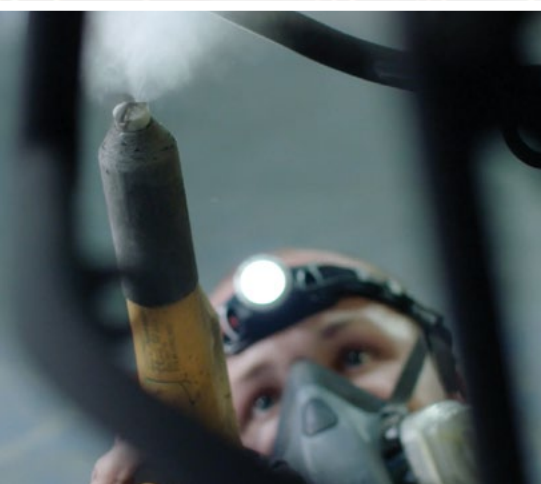
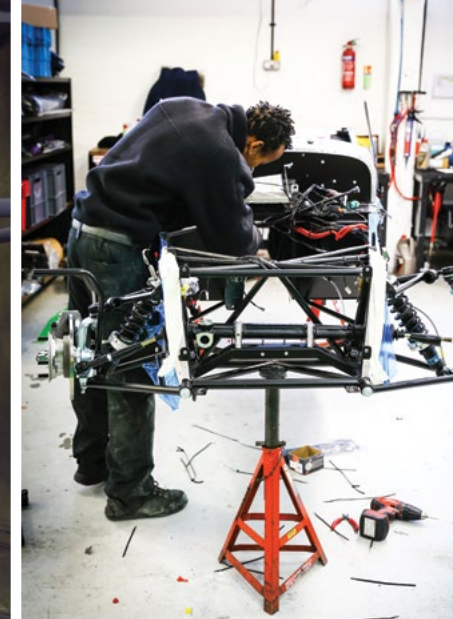
A 237ps champion ready to take on any highway one-on-one, the Seven 485 delivers huge dollops of torque, backed up by a high-revving, dry-sumped engine that makes it a wild, but intensely visceral ride.

This isn't a car it's a missile. With Wheels. And you're in it.

Do you dare...?











---

## BUILT UPON DECADES OF CRAFTSMANSHIP

---

In this era of automation and technology, it's too easy to let science do everything for you. Your car can now park itself and moves are afoot to allow it to drive you around too.

At Caterham, we hold with the theory that less is more.

Driving a Seven is all about just that – no driver aids or frills, just stripped back driving – a pure and responsive driving experience.

Our crack team of technicians create your Seven lovingly and apply their own sense of pride into every component they attach to the car's iconic frame. When they're not bolting our British bundles of fury together, they're hard at work theorising and ruminating on how they can save even more weight, refine the chassis further and extract every last drop of power from the Seven.

That's why every car that leaves our factory carries with it the name of the technicians who built it.

---

## OUR PRIDE; YOUR JOY

---





## EVER DREAMED OF BECOMING A RACING DRIVER?

The Caterham name has always been synonymous with motorsport and today the Seven remains one of the most successful and popular race cars in the world. It isn't really surprising, as when the Seven was conceived it was always first and foremost a race car. After dominating races across the World, by the 1960s the car was declared "too fast to race" and was subsequently banned from competing in many established race championships. This ban effectively led to the birth of what Caterham racing is now most famous for – incredibly competitive and closely fought one make racing championships. Today the Seven is raced by more than a thousand competitors globally in both Caterham's official motorsport championships and other independent series' who choose the Seven for it's ability to deliver dramatic racing for all levels of racing driver.

Please contact your nearest Caterham dealer for information on local championships and events.



\* Caterham Motorsport official race championships.

*Championships, events and race car specifications vary from country to country due to local rules and regulations.*



## ENHANCE YOUR SEVEN EXPERIENCE

Road or track: whatever's in front of you, turn it into an experience. Challenge yourself, raise your heart rate and ensure you're equipped with the right tool for the job. Our S and R Packs are designed to enhance your driving preferences, so whether you're a track day dominator with the R Pack or a 'captain slow' Sunday driver with the S Pack, we've got you covered.

Breaking free of the daily grind and enjoying the open road, never felt so good with the S Pack. Including sumptuous leather seats, heaters, wide track suspension and a fully carpeted interior, the S Pack ensures you leave each and every drive feeling as though you conquered it.

For the full-blooded track-ready Caterham it has to be the R Pack. The race-bred package is engineered to maximise the performance of the already impressive Seven platform and includes a limited-slip differential, sports suspension, four-point road harnesses, carbon leather seats and numerous other race-inspired upgrades. The R Pack allows you to explore your Seven's racing prowess, closer to insanity, closer to the apex – feel the thrill of finding the limit.

### **S** **PACK** DESIGNED FOR THE ROAD

- Fully carpeted interior
- Unique key, gear knob & instruments
- Black leather seats
- 12V socket
- Aero filler cap
- Wide track suspension
- Choice of four paint finishes

### **R** **PACK** ENGINEERED FOR THE TRACK

- Limited-slip differential
- Lightweight flywheel
- Rear anti-roll bar
- Sport suspension pack
- 15" Orcus alloy wheels with Avon tyres
- Uprated brake master cylinder
- Carbon fibre dashboard
- Carbon leather tunnel top
- Carbon leather seats
- Carbon wind deflector
- Carbon wings & sill protectors
- 4-point race harnesses
- Black pack
- Unique key, gear knob & instruments
- Shift light
- 12V socket
- Aero filler cap
- Choice of four paint finishes









## THE ONLY WAY TO UNDERSTAND A SEVEN IS TO DRIVE ONE

---

### HIRE

The Caterham Seven is known for being one of the most unmistakable and desirable British sports cars of all time. So why wouldn't you want to take one for a spin?

Grab your sunglasses, strip back the hood, step over the side exit exhaust and climb in. Whether you're treating it as a long test drive or treasuring the day as your first glimpse at a Caterham's awe-inspiring power, the hire will be unforgettable.

Many of our dealerships have a broad fleet of hire cars on offer in either S3 or SV size chassis to suit everyone.

For more information on hire costs, mileage restrictions and full terms and conditions, please contact your nearest hire centre directly.

### EXPERIENCE

Our Caterham Driving Experiences are operated through our European dealer network. These events take place across the UK, France and Germany.

Wherever you go, however, the experience is the same; a fantastic day's driving behind the wheel of a car once branded 'too fast to race'.

Suitable for everyone, even those with no track experience, all Caterham Driving Experiences are operated by professional driving instructors who share both our passion for the Seven and our desire to offer you the most exhilarating day's driving possible.

For more information on our Caterham Experience days and to book onto an event please contact your nearest Caterham Experience centre.





# History



1957 1959 1965 1973 1987 1995 2000 2002 2005 2007 2008 2011 2012 2013 2016 2017

July 1957 construction of chassis #400 – the first Seven begins	Graham Nearn creates Caterham Cars, located on Caterham Hill, Surrey	Caterham supplies Seven Series II registered KAR 120C for The Prisoner TV series	Caterham takes over production rights for the Seven from Lotus	Production moves to Dartford	New racing Academy for novices in the UK	Launch of the new SV, wider bodied chassis	R400 wins its class at the 24 hours Nurburgring by 10 laps	Nearn family sells to Corven Ventures	50 years of the Seven celebrations held at Donington Park	R500 wins Top Gear Car of the Year	Corven Ventures sells to Tony Fernandes and Kamarudin Meranun	Caterham enters and competes in the FIA Formula 1 World Championship	Launch of the fastest ever production Seven, the Seven 620	Caterham teams up with LEGO to produce model Seven 620R	Another milestone in the Caterham story as the Seven turns 60
---	--	--	--	------------------------------	--	--	--	---------------------------------------	---	------------------------------------	---	--	--	---	---

EQUIPMENT

ENGINE	165	275	355	485
Suzuki K6A 3 cylinder 660cc turbocharged engine	●	-	-	-
Ford Sigma 4 cylinder 1596cc naturally aspirated engine	-	●	-	-
Ford Duratec 4 cylinder 1999cc naturally aspirated engine	-	-	●	●
Lightened flywheel	-	<i>R</i>	●	●
Dry sump oil system	-	-	○	●
Oil to air cooler	-	-	-	●
12V battery	●	●	●	●

TRANSMISSION	165	275	355	485
5-speed gearbox	●	●	●	-
6-speed gearbox	-	○	○	●
Transmission tunnel insulation	●	●	●	●
Limited-slip differential	-		<i>R</i>	<i>S+R</i>

● Standard   ○ Option   *S* Standard on S Pack (available as an option on non-S models)   *R* Standard on R Pack (available as an option on non-R models)  
*S\** Only available on S Pack   *R\** Only available on R Pack   *S+R* Standard on S and R Pack (available as an option on non-S and R models)

SUSPENSION	165	275	355	485
Quick ratio steering rack	●	●	●	●
Standard width dual front unequal length wishbones	●	●	●	●
Widetrack dual front unequal length wishbones	-	<i>S+R</i>	<i>S+R</i>	<i>S+R</i>
Front anti-roll bar	●	●	●	●
Live rear axle with Panhard rod location	●	-	-	-
Dedion rear suspension with A frame and trailing arms	-	●	●	●
Dedion rear suspension with A frame and Watt's linkage	-	-	-	●
Adjustable rear anti-roll bar	-	<i>R</i>	<i>R</i>	<i>R</i>
Road optimised dampers	●	●	●	●
Road optimised dampers with adjustable spring platforms	-	<i>S</i>	<i>S</i>	-
Track optimised dampers with adjustable spring platforms	-	<i>R</i>	<i>R</i>	<i>S</i>
Race optimised dampers with adjustable spring platforms	-	○	○	<i>R</i>

BRAKES	165	275	355	485
Solid front discs	●	●	●	-
Ventilated front discs	-	○	○	●
Grooved ventilated front discs	-	-	-	-
Drum rear brakes	●	-	-	-
Disc rear brakes	-	●	●	●
Quad piston callipers	-	○	○	●



WEATHER PROTECTION	165	275	355	485
Aeroscreen – composite	●	●	●	●
Aeroscreen – carbon fibre	○	<i><b>R</b></i>	<i><b>R</b></i>	<i><b>R</b></i>
Half doors – vinyl (with aeroscreen only)	○	○	○	○
Half doors – carbon (with aeroscreen only)	○	○	○	<i><b>R</b></i>
Tonneau cover – vinyl	○	○	○	○
Tonneau cover – carbon vinyl	○	○	○	<i><b>R</b></i>
Half hood	○	○	○	○
Hood bag	○	○	○	○
Boot cover – vinyl	●	●	●	●
Boot cover – carbon vinyl	○	○	○	<i><b>R</b></i>

TRACK OPTIONS	160	275	355	485
Inertia reel seat belt	●	●	●	–
4 point road harness with steel adjusters	○	<i><b>R</b></i>	<i><b>R</b></i>	<i><b>S+R</b></i>
Plumbed-in fire extinguisher	○	○	○	○
Battery master cut-off switch	○	○	○	○
Roll over bar	●	●	●	●
Trackday roll over bar	○	○	○	○

INTERIOR	165	275	355	485
Rubber floor mats	<b>S</b>	<b>S+R</b>	<b>S+R</b>	<b>S+R</b>
Tunnel carpets	●	●	●	●
Bulkhead tunnel carpet	<b>S</b>	<b>S</b>	<b>S</b>	<b>S</b>
Boot floor carpet	●	●	●	●
Fully carpeted boot	<b>S</b>	<b>S</b>	<b>S</b>	<b>S</b>
Dashboard – black textured finish	●	●	●	●
Dashboard – carbon fibre	○	<b>R</b>	<b>R</b>	<b>R</b>
12V socket	<b>S</b>	<b>S+R</b>	<b>S+R</b>	<b>S+R</b>
Tunnel top – black vinyl	●	●	●	●
Tunnel top – carbon leather	○	<b>R</b>	<b>R</b>	<b>R</b>

SEATS	165	275	355	485
Cloth	●	●	●	–
Black leather	<b>S</b>	<b>S</b>	<b>S</b>	<b>S</b>
Carbon leather	○	<b>R</b>	<b>R</b>	<b>R</b>
Lowered floor seating position	○	○	○	○

CONTROLS	165	275	355	485
MOMO collapsible steering wheel	●	●	●	●
Black faced instruments	●	●	●	●
Grey faced instruments with 'S' detail	<b>S*</b>	<b>S*</b>	<b>S*</b>	<b>S*</b>
Black faced instruments with 'R' detail	–	<b>R*</b>	<b>R*</b>	<b>R*</b>
Gear knob – aluminium silver	●	●	●	–
Gear knob – aluminium grey with 'S' detail	<b>S*</b>	<b>S*</b>	<b>S*</b>	<b>S*</b>
Gear knob – aluminium black with 'R' detail	–	<b>R*</b>	<b>R*</b>	<b>R*</b>
Shift light	–	<b>R</b>	<b>R</b>	<b>R</b>



EXTERIOR	165	275	355	485
Nose – composite	●	●	●	●
Front cycle wings – composite	●	●	●	–
Front cycle wings – carbon	–	○	○	●
Rear wings – composite	●	●	●	●
Rear wings – carbon	–	○	○	○
Rear wing protectors – stainless steel	○	●	●	●
Rear wing protectors – carbon	–	<i><b>R</b></i>	<i><b>R</b></i>	<i><b>R</b></i>
Filler cap – aluminium aero type silver	●	●	●	●
Filler cap – aluminium aero type black	○	<i><b>R</b></i>	<i><b>R</b></i>	<i><b>R</b></i>
Spare wheel and carrier	○	○	○	○
Polished exhaust	○	○	○	○
Headlights – Halogen	●	●	●	●
Headlights – LED	○	○	○	○

WHEELS	165	275	355	485
13" Apollo – HiPower Silver (6" front & 6" rear)	–	○	–	–
13" Apollo – HiPower Silver (6" front & 8" rear)	–	○	●	<i><b>R</b></i>
13" Apollo – Black with diamond cut rim (6" front & 6" rear)	–	○	–	–
13" Apollo – Black with diamond cut rim (6" front & 8" rear)	–	○	<i><b>R</b></i>	<i><b>R</b></i>
14" Steel finish (4.5" front & 4.5" rear)	●	–	–	–
14" Classic – Silver (6" front & 6" rear)	–	●	–	–
15" Orcus – Silver (6.5" front & 6.5" rear)	–	<i><b>S</b></i>	–	<i><b>S</b></i>
15" Orcus – Anthracite (6.5" front & 6.5" rear)	–	<i><b>R</b></i>	–	<i><b>S</b></i>



13" APOLLO



14" STEEL\*



14" CLASSIC



15" ORCUS



\* Seven 165 only.

TECHNICAL SPECIFICATIONS

ENGINE	165	275	355	485
Engine type	3 cyl in-line	4 cyl in-line	4 cyl in-line	4 cyl in-line
Capacity	658cc	1596cc	1999cc	1999cc
Fuelling	Fuel injected	Fuel injected	Fuel injected	Fuel injected
Bore	68.0mm	79.0mm	87.5mm	87.5mm
Stroke	60.4mm	81.4mm	83.1mm	83.1mm
Cylinder head	12v DOHC	16v DOHC	16v DOHC	16v DOHC
Compression ratio	8.4:1	11.0:1	10.8:1	13:1
Induction system	Single butterfly	Single butterfly	Single butterfly	4 Port Roller Barrel
Lubrication system	Wet sump	Wet sump	Wet sump	Dry sump
Fuel type	Unleaded 95 RON	Unleaded 95 RON	Unleaded 95 RON	Unleaded 95 RON
CO <sub>2</sub> Emissions	114g/km	144g/km (5 spd) 147g/km (6 spd)	185g/km	179g/km
Fuel consumption	Urban conditions: 6.4 l/100 km  Extra-Urban conditions: 4.1 l/100 km  Combined: 4.9 l/100 km	Urban conditions: 8.4 l/100 km (5 speed) 8.1 l/100 km (6 speed)  Extra-Urban conditions: 4.9 l/100 km (5 speed) 5.4 l/100 km(6 speed)  Combined: 6.2 l/100 km (5speed) 6.3 l/100 km (6speed)	Urban conditions: 11.7 l/100 km  Extra-Urban conditions: 6.2 l/100 km  Combined: 8.2 l/100 km	Urban conditions: 10.2 l/100 km  Extra-Urban conditions: 6.2 l/100 km  Combined: 7.7 l/100 km

POWER	165	275	355	485
Maximum power	79ps @ 7000rpm	137ps @ 6800rpm	170ps @ 7400rpm	237ps @ 8500rpm
Maximum torque	107Nm @ 3400rpm	162Nm @ 4100rpm	194Nm @ 5100rpm	206Nm @ 6300rpm
Maximum RPM	7700rpm	6800rpm	7400rpm	8500rpm

PERFORMANCE (maximum)	165	275	355	485
0-100km/h	6.9s	5.0s	4.8s	3.4s
Maximum speed	100mph (161km/h)	122mph (196km/h)	130mph (209km/h)	136mph (225km/h)

TRANSMISSION	5-speed	6-speed
1st	3.136	2.690
2nd	1.880	2.010
3rd	1.330	1.590
4th	1.000	1.320
5th	0.814	1.130
6th	-	1.000
Final drive	3.91:1	3.64:1



DIMENSIONS	S3 Chassis (Seven 165 only)	S3 Chassis	Wide-bodied SV Chassis
Wheelbase	2225mm	2225mm	2305mm
Front track	1220mm	1270mm* / 1336mm**	1446mm
Rear track	1301mm	1336mm	1446mm
Length	3100mm	3100mm	3300mm
Width	1480mm	1575mm	1685mm
Typical height – hood up	1165mm	1115mm	1140mm
Typical height – hood down	1040mm	990mm	1015mm
Internal width	930mm	930mm	1110mm
Luggage capacity	120L	120L	130L
Fuel tank capacity	32L	32L	36L



\* Road suspension  
\*\* Sports, track and race suspension

TYRE FITMENT

	185/70	Avon ZT5		Avon ZZS			Avon ZZR	
		155/65	185/60	185/55	195/50	215/55	185/55	215/55
13" Apollo x 6"	–	–	–	●	–	–	○	–
13" Apollo x 8"	–	–	–	–	–	●	–	○
14" Steel	–	●	–	–	–	–	–	–
14" Classic	–	–	●	–	–	–	–	–
15" Orcus	–	–	–	–	●	–	–	–



**STANDARD NON-METALLIC**



Gravity Black



Exocet Red



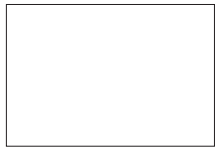
Vintage Green



Firecracker Yellow

ALL SEVEN MODELS ARE  
AVAILABLE IN OUR SELECTED  
RANGE OF PAINT FINISHES\*

**NON-METALLIC**



Caterham White



Bright Green



Gulf Blue



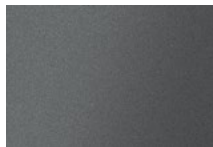
Black Grey

WE CAN ALSO PAINT YOUR  
CATERHAM IN ANY MAJOR  
MANUFACTURER'S COLOUR\*\*

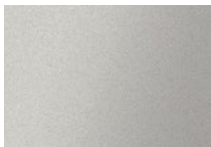
**METALLIC & SPECIAL NON-METALLIC**



Viper Blue



Dark Silver



Platinum Silver



Ultraviolet



Peppermint Green

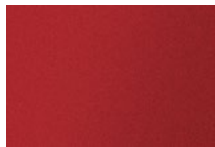


Ballistic Orange

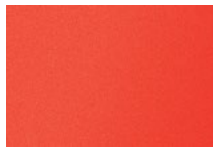


Riviera Blue

**PEARLESCENT**



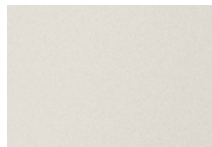
Competition Red



Arancio Argos



Detonator Yellow



Crystalline White



Roulette Green



Caterham New F1 Green

\*Prices vary depending on model & specification.

\*\* Paint code required. Some colours require specific materials and processes which may increase build time and cost.

Colours shown are representative of Caterham Custom Paint Range and may vary on actual vehicles. Please visit your nearest Caterham dealer for more information.



# CATERHAM

Caterham Cars Limited, 2-3 Kennet Road, Dartford, Kent, DA1 4QN  
+44 (0) 1322 625800

**CATERHAMCARS.COM**



/CaterhamCars



@caterhamcars

To find your local Caterham dealer, please go online under: [uk.caterhamcars.com/](http://uk.caterhamcars.com/) choose your country.



## **Kumschick Sports Cars AG**

Luzernerstrasse 57

6247 Schoetz

041 980 05 80

[sales@kumschick.ch](mailto:sales@kumschick.ch) - [www.kumschick.ch](http://www.kumschick.ch)

[www.facebook.com/KumschickSportsCars](http://www.facebook.com/KumschickSportsCars)

